



# INDIAN SCHOOL AL MAABELA

(ISO 9001:2015 CERTIFIED INSTITUTION)

YEARLY EXAMINATION 2019-2020

SAMPLE QUESTION PAPER

SCIENCE

ISAM/FR/MDL/QP/02

Class: VIII

Date: 00/02/2020

Max. Marks: 80

Time: 3 Hours

**General Instructions:**

- (i) The question paper comprises three sections – A, B and C. Attempt all the sections.
- (ii) Internal choice is given in each section.
- (iii) All questions in Section A are one-mark questions comprising MCQ, VSA type and assertion-reason type questions. They are to be answered in one word or in one sentence.
- (iv) All questions in Section B are three-mark, short-answer type questions. These are to be answered in about 50 - 60 words each.
- (v) All questions in Section C are five-mark, long-answer type questions. These are to be answered in about 80 – 90 words each.
- (vi) This question paper consists of a total of 30 questions.

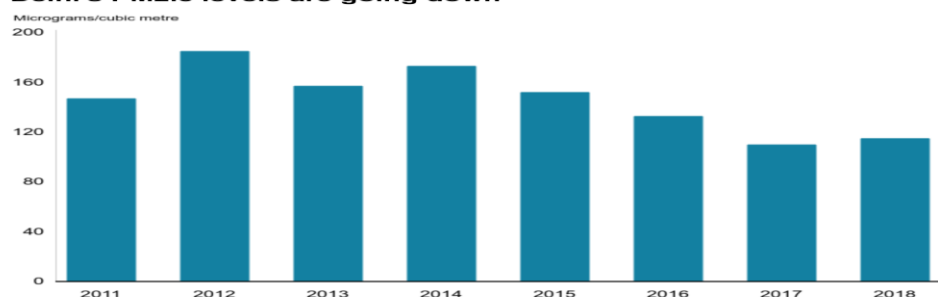
**SECTION A**

1. Define Carbonisation. 1
2. What do you mean by persistence of vision? 1

3. Answer question numbers 3(a) - 3(d) on the basis of your understanding of the following paragraph and the related studied concepts.

Delhi's pollution problem is also caused by the factor smog and other harmful particles are produced by farmers in other states. Initiatives such as a 1,600 km long and 5 km wide green ecological corridor along Aravalli range from Gujarat to Delhi which will also connect to hill range is being considered with planting of 1.35 billion (135 crores) new native trees over 10 years to combat the pollution are one of the causes of poor air quality. Other causes include wood-burning fires, fires on agricultural land, exhaust from diesel generators, dust from construction sites, burning garbage and illegal industrial activities in Delhi. Although pollution is at its worst from November to February, Delhi's air misses clean-air standards by a wide margin for much of the year. It is a noxious mix of emissions from its 9 million vehicles, construction dust and burning of waste. On the worst days, the air quality index, a benchmark ranging from zero (good) to 500 (hazardous), exceeds 400.

**Delhi's PM2.5 levels are going down**



Annual average across all monitoring stations  
Source: CSE report (using official data)

- 3(a) What is the step taken to reduce the pollution level in Delhi? 1
- 3(b) Write any two sources mentioned which contributes to the increased level of pollution in Delhi. 1
- 3(c) From the given graph which year marked with highest pollution? 1
- 3 (d) Suggest any two method to reduce air pollution. 1
4. Answer question numbers 4(a) - 4(d) on the basis of your understanding of the following paragraph and the related studied concepts. 1
- Adolescence is a stage of insecurity and confusion. The mental and physical changes that occur during adolescence can cause mood swings..Adequate parental support is essential. When confused an adolescent should seek advice from teachers and parents rather than from friends of the same age..It is easy for adolescents to be led into the wrong path by wrong company and fall prey to drugs and alcohol abuse. Drugs are addictive. Drug addicts are also at the risk of acquiring the disease AIDS. The changes in the body of adolescents are mainly brought about by hormones. Medical problems, such as eating disorders and depression can also affect the adolescents and cause emotional instability. 1
- 4(a)What brings about the changes in the body of adolescents? 1
- 4(b)Name the disease which can be used by sharing infected needles among drug addicts? 1
- 4(c) Which is the hormone associated with male puberty? 1
- 4(d)Why should adolescents have a proper balanced diet? 1
5. Non metals used in fertilizers. 1
- a) Oxygen      b) Hydrogen      c)Nitrogen      d) both a and b
- OR**
- A non metal which reacts vigorously in air.
- a)Phosphorus      b) Sulphur      c) Carbon      d) Sodium
6. World's first oil well was drilled in 1
- a) Assam      b) Saudi Arabia      c) Pennsylvania      d) None of these
7. Which gas is liberated when Metals react with sodium hydroxide? 1
- a)Oxygen      b) Hydrogen      c) Carbon dioxide      d)Nitrogen
8. The pole star can be located with the help of 1
- Cassiopeia      b) Ursa major      c) Orion      d) None of these
- OR**
- One light year is equal to
- a)  $9.46 \times 10^{15}$  m      b)  $3.9 \times 10^{15}$  m      c)  $6.9 \times 10^{15}$  m      d)  $5.96 \times 10^{15}$  m
- 9 The power house of the cell 1
- a)Ribosomes b)Mitochondria c)Plastids d)Nucleus
- 10 Dodo bird is an example of 1
- a)Extinct      b)Endangered      c)Vulnerable      d)Rare
- 11 The light ray which strikes any surface is called 1
- (a) Incident Ray      (b) Normal
- (c) Reflected Ray      (d) Refracted Ray
- 12 A place where an earthquake originates is called----- 1

- (i) Epicenter (ii) Focus  
(iii) Fault (iv) None of these

**OR**

The graphical record of the intensity of seismic waves is called-----

- (i) Seismogram (ii) Seismograph  
(iii) Richter Scale (iv) None of these

For question numbers 13 and 14 two statements are given- one labeled *Assertion* (A) and the other labeled *Reason* (R). Select the correct answer to these questions from the codes (i), (ii), (iii) and (iv) as given below

- i) Both A and R are true and R is correct explanation of the assertion.  
ii) Both A and R are true but R is not the correct explanation of the assertion.  
iii) A is true but R is false.  
iv) A is false but R is true.

- 13 Assertion: Cytoplasm is a thick ,jelly like fluid inside the cell bound by a cell membrane Reason: The cell membrane is not a part of the cytoplasm 1
- 14 Assertion : Dogs can hear the sound produced by a galton whistle Reason: Galton whistle produces infrasonic sound 1

### SECTION B

- 15 Define Water pollution? What are the major causes of water pollution? 3
- 16 Give any one use and the physical property related to it for the following metals. 3
- a) Aluminium b) Gold c) Copper

- 17 Explain with the help of an activity that ignition temperature is required for any substance to catch fire. 3

**OR**

Explain the three types of combustion with example.

- 18 'Say no to drugs' comment on the following statement 3

- 19 With a neat labeled diagram explain the female reproductive system 3

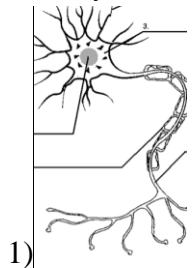
**OR**

Draw a neat labeled diagram of human sperm.

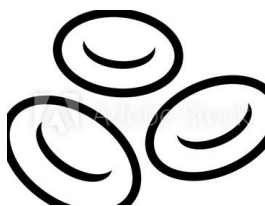
Identify the cells

20

a)



1)



2)

- b) Define a cell.

- 21 What is an electroscope? Draw its labeled diagram. List its uses 3

- 22 Define noise pollution. What are the various sources of noise pollution? 3
- OR**
- How is sound produced by human beings?
- 23 (a) Differentiate between audible and inaudible sound. 3  
(b) What do you mean by amplitude?
- 24 What is a lightning conductor? How does it protect a building? 3

### SECTION C

- 25 “Many useful products are obtained from petroleum and natural gas” 5
- a) What is the name given for products manufactured from them?
- b) Give three examples of products manufactured from petroleum and natural gas.
- c) Expand PCRA.
- d) Suggest any two ways advised by PCRA to save fossil fuels.
- e) What do you mean by petroleum refining. Name the method used for refining.
- 26 a) Draw and mark the parts of a flame . 5  
b) Explain the three zones of a flame.

**OR**

List any five pollutants which cause pollution due to combustion of fossil fuel. Tabulate their harmful effects and their sources.

- 27 Write a brief note on the nutritional requirement of adolescents. 5
- 28 What is the red data book and what are its categories? 5
- OR**
- Differentiate between zoological park and wildlife sanctuary.
- 29 (a) Why are multiple images formed when two plane mirrors are placed at some angle to each other? 5  
(b) List three ways by which you can protect your eyes.
- 30 (a) Explain the atmospheric conditions on the moon. 5  
(b) What are inner and outer planets of solar system? How do they differ?

**OR**

- (a) What is pole star? Why does it appear stationary?
- (b) How can you locate pole star with the help of ursa major?